



101 ADVANTAGE PLUS 7616



101 ADVANTAGE PLUS 7616 Model number: 57ADP16763AH18

3 beds • 2 baths • 1216 sq.ft. • 16' width • 76' depth

Our home building facilities invest in continuous product and process improvements. Plans, dimensions, features, materials, specifications and availability are subject to change without notice or obligation. Renderings and floor plans are representative likenesses of our homes and may differ from the actual homes. We invite you to tour a Home Center near you and inspect the highest value in quality housing available or call (704) 528-7960 to speak with a Home Consultant. Copyright 2017, CMH. All rights reserved.

<https://www.freedomhomestroutman.com>

FREEDOM HOMES- TROUTMAN

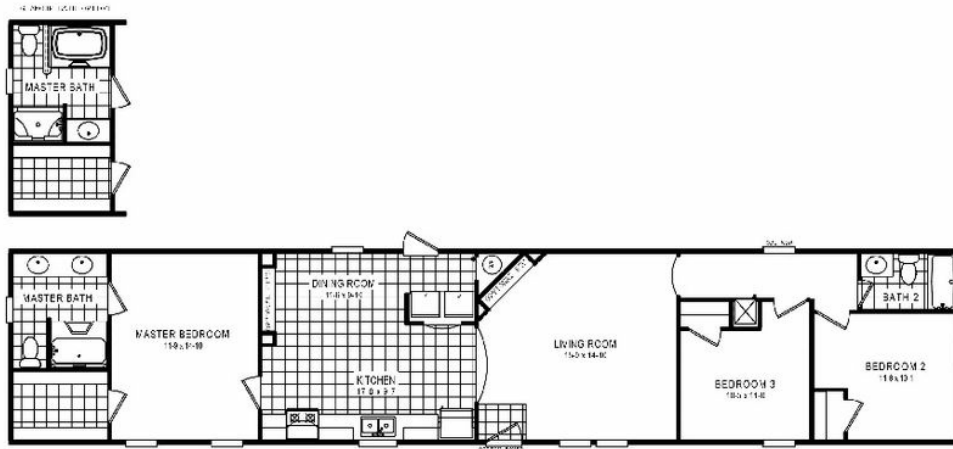
1124 CHARLOTTE HWY
TROUTMAN, NC 28166

Monday - Thursday: 9am - 7pm
Friday: 9am - 6pm
Saturday: 9am - 5pm
Sunday: Closed

(704) 528-7960



101 ADVANTAGE PLUS 7616



101 ADVANTAGE PLUS 7616 Model number: 57ADP16763AH18

3 beds • 2 baths • 1216 sq.ft. • 16' width • 76' depth

Our home building facilities invest in continuous product and process improvements. Plans, dimensions, features, materials, specifications and availability are subject to change without notice or obligation. Renderings and floor plans are representative likenesses of our homes and may differ from the actual homes. We invite you to tour a Home Center near you and inspect the highest value in quality housing available or call (704) 528-7960 to speak with a Home Consultant. Copyright 2017, CMH. All rights reserved.

<https://www.freedomhomestroutman.com>

FREEDOM HOMES-
TROUTMAN

1124 CHARLOTTE HWY
TROUTMAN, NC 28166

Monday - Thursday: 9am - 7pm
Friday: 9am - 6pm
Saturday: 9am - 5pm
Sunday: Closed

(704) 528-7960